

**HI-MACS® "DOBLE DUEÑO"  
APARTMENT IN VALENCIA, SPAIN**

*By Cuartopensante*

Emotions govern people's lives and the spaces that we create house them. That is the starting point for Cuartopensante, the interior-design studio responsible for the "Double Duet", a 130 m<sup>2</sup> apartment fitted out with **HI-MACS®** in Albaida (Valencia).

The apartment's owner had bought a newly-constructed building, but wanted a home that was functional as well as offering a personality. His joint roles as a businessman and a family man were the starting point for the project. The owner spends a lot of his time travelling, so the home needed to have a special character: a haven that retained aspects such as convenience and familiarity.

Inspired by the city's Moorish roots, this residence with an Eastern touch blends four main colours: gold leaf, oak, white, and black. Without losing sight of the objective which

was to design a space inspired by emotions of the owner. So black and white was used for basic items of furniture and then complemented with the simplicity of wood and the richness of gilded tones.

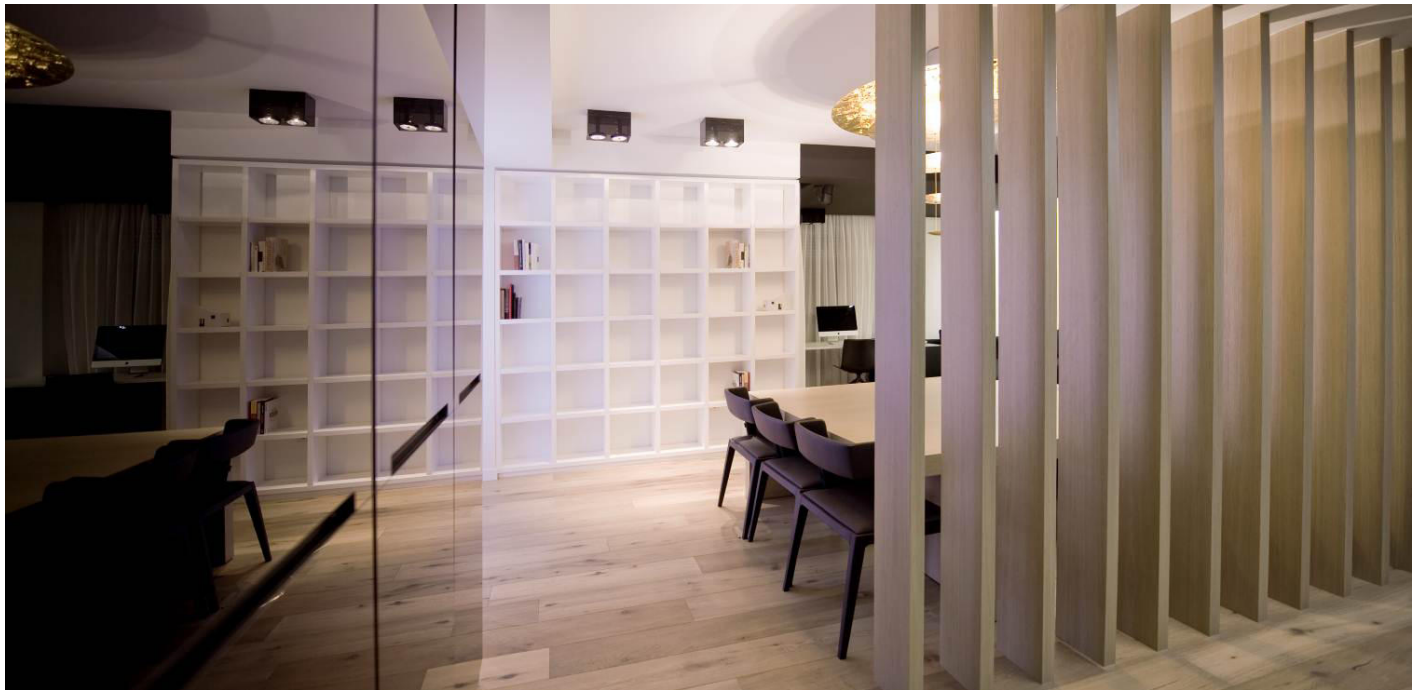
However, if there is one material that stands out above others because of its aesthetic aspect and its quality, that material is **HI-MACS®**, which has been used in large parts of the house: from the kitchen worktop and some coverings, to various elements of the main washroom. According to Rafael Muñoz, interior designer and one of the architects of the project: *"The use of HI-MACS® brought a number of advantages, including the pure cleanliness of acrylic stone, its technical characteristics, and the chance to work with a thickness of 9 millimetres."*



**HI-MACS® Media contact for Europe:**

Mariana Fredes – LG Hausys Europe - +41 (0) 22 879 54 83 – [mfredes@himacs.eu](mailto:mfredes@himacs.eu)  
High resolution photos available at [www.himacs.eu/press](http://www.himacs.eu/press)





Architecture takes shape between clarity and shadow. Based on that premise, the ceiling lamp with Egyptian thread creates random light play that generates a dramatic poetic effect.



The interior-design team were presented with a shell of a building. So, with a perimeter with drainage, pillars, and common elements already defined, they started to design areas by adapting the installations to the new proposal. The first step was to change the partition, then divide the house into three main areas.

Upon entering the house, a courtesy wardrobe with a black mirror and a divider made up of oak planks measuring 20 x 2.35 metres high provides visual separation between the living room, the dining room, and the study.

Furniture separates the dining room from the living room, which contains a large table and six chairs covered in black leather and “*La macchina della luce*”, a lamp of large dimensions made with gold leaf.

**HI-MACS® Media contact for Europe:**

Mariana Fredes – LG Hausys Europe - +41 (0) 22 879 54 83 – [mfredes@himacs.eu](mailto:mfredes@himacs.eu)  
High resolution photos available at [www.himacs.eu/press](http://www.himacs.eu/press)

The front wall of the living room is made of gold leaf, which contrasts with the black L-shaped settee, 4 metres long and half a metre wide. The white of the central module is made of **HI-MACS®** and houses a bio-ethanol fire offering serenity and comfort to this common area of the house.



Another of the family's wishes was to use all the natural light of the residence. Lighting is a design tool that is essential to give shape to interiors, set out areas, fix points of interest, and fill a corner with poetry. The request was achieved by designing a work area set beside the living-room windows and offering relaxing views.

Using an eco-friendly concept, the office space – as in the rest of the house – is automated thanks to an external cell that measures light intensity and regulates it according to the time of day or the season of the year, contributing to a lowering of the internal energy costs of the home, an increase

in lighting comfort, and greater individualised control.

White predominates in the **kitchen** area, with accents of colour in the interior, one of the side walls, and the ceiling light – elements that are covered with oak to achieve continuity with the flooring.

The invisible joins offered by **HI-MACS®** were essential to incorporate the flow of the worktop into a peninsula 3.40 metres wide, as much for reasons of hygiene as for aesthetics. Acrylic stone has proved to be truly practical for food-preparation surfaces. To those qualities are added its ease of care, its resistance to blows, and – if necessary – its ability to be repaired *in situ*.

**HI-MACS® Media contact for Europe:**

Mariana Fredes – LG Hausys Europe - +41 (0) 22 879 54 83 – [mfredes@himacs.eu](mailto:mfredes@himacs.eu)  
High resolution photos available at [www.himacs.eu/press](http://www.himacs.eu/press)

The areas that make up the apartment have a fluid relationship between them. Proof of that is offered by the glass-walled interior garden, which leads to the second area of the house. The glass represents a visual separator and contains the trunk of a century-old olive tree, it offers a wide panorama to the kitchen.

The master bedroom is configured as an ensuite and contains a bed with an oak canopy set in the middle of the room. The dressing room – with a mirror measuring 170 x 120 centimetres on a wall completely covered with the same wood as the floor – is separated from the bedroom by a glass-walled bathroom, with both areas being lit

with built-in ceiling lights. As a result, the cupboards and shelves blend with the bathroom fittings, hidden in a large area of extra-clear and self-cleaning glass.

Thanks to the thermoforming property of **HI-MACS®**, the material can be adapted to many shapes and can be blended with other materials like wood or glass, to obtain a result that is elegant, original, and unique. For those reasons, **HI-MACS®** has been used in the main bathroom including the washbasin, the bath, and the shower both walls and the floor.

Another of the bathroom's advantages is its thermostatic system, which controls use of water in the shower and the bath.

Details of the master bedroom, such as the front wall covered with gold leaf and the bio-ethanol fireplace in **HI-MACS®** at the foot of the bed, give the property a romantic atmosphere.



**HI-MACS® Media contact for Europe:**

Mariana Fredes – LG Hausys Europe - +41 (0) 22 879 54 83 – [mfredes@himacs.eu](mailto:mfredes@himacs.eu)  
High resolution photos available at [www.himacs.eu/press](http://www.himacs.eu/press)



Part of the spectacular attractiveness of the house is due to its exterior. The terrace of the main bedroom and the dining room both stand out thanks to their sophisticated pieces by Kettal, designed by Patricia Urquiola. The armchairs, the 2-seater settee, and the chairs hanging from the ceiling like swings give elegance and freshness to this area for relaxation.

#### **About Cuartopensante**

Cuartopensante is an interior-design studio based in Ontinyent (Valencia). Its work is the reflexion of owners' emotions. Areas have their own, individual lives, and they transmit a range of feelings to us. There are areas that conjure up emotions because of their originality, their elegance, their serenity... real sensations that appear in each project. A project that is in coherence with emotions, feelings, desires, dreams that allow us to enrich the owners' "living area".

Thanks to a study of automation throughout the residence, the result is an intelligent home in which energy resources are used to a maximum. An example of energy efficiency is offered by the terraces, with awnings that open and close depending on the angle of the sun and the season of the year.

#### **Technical sheet**

**Project:** "Double Dueto" apartment

**Photographer:** Sergio Pomar Montahud

**Distributor:** Maderas y Chapas Alpisa, SA

**Fabricator:** Fustería Castelló

**Owner:** Candid Penalba (manager, Cotopur)

**Location:** Albaida, Valencia - Spain

**Design:** Cuartopensante Studio

**Total area:** 130 m<sup>2</sup>

**Material:** HI-MACS® Alpine White

**[www.himacs.eu](http://www.himacs.eu)**



## **HI-MACS® Natural Acrylic Stone**

**HI-MACS®** is the **New Generation** of solid surface. It is composed of 70% natural stone powder derived from bauxite, 25% high quality acrylic resin and 5% natural pigments. Designed and produced by **LG HAUSYS**, a world technology leader, it is distributed across Europe from **LG Hausys Europe** headquarters in Geneva.

It is a product of highest quality, and is inert and ecological. Its versatility allows users to mould and transform their ideas into reality with possibilities far beyond those offered by materials traditionally used in the world of architecture and design.

The most prestigious groups have adopted this product which adapts to the most demanding needs with its extraordinary characteristics; it is completely non-porous, has the highest level of durability and thus does not lose its colouring. It also has uniform thickness, allowing for perfectly imperceptible joints! Easy to fabricate, **HI-MACS®**, with its excellent thermoformability properties, lets you adapt the material to the desired shapes and to create a range of designs that is nearly infinite.

**HI-MACS®** is used by the most prestigious companies, and many well-known architects and designers such as **Zaha Hadid, Jean Nouvel, David Chipperfield, Ron Arad, Marc Newson, Elke Delugan Meissl** and **Joaquín Torres**. Some of the most notable projects made out of **HI-MACS®** include the **Prado Museum** and the **Hotel Puerta América** in Spain, **Leonardo Glass Cube** and the **Porsche Museum** in Germany and the **Zara** flagship store in the Westfield Shopping Complex in London, UK.

**HI-MACS®** is available in more than 100 colours, comprised of the following ranges: **Solids, Granite, Sand, Pearl & Quartz, Volcanics, Lucent, Galaxy, Marmo**, and the new recycled range of colours **HI-MACS® Eden**. Eden is **GREENGUARD** Certified for indoor air quality as a “**Low Emitting Product**” which can help your projects achieve **LEED® credits** in sustainable design, under the Green Building Rating System managed by the **U.S. Green Building Council (USGBC)** – A clear benefit for constructing sustainable buildings.

**HI-MACS®** is manufactured in 3, 6, 9 and 12 mm thicknesses. Furthermore a wide range of sinks and bowls is available.

**HI-MACS®** is synonymous with the very best quality thanks to a production process that it is one of the world's most innovative, sourcing the finest materials that result in a harder, flatter more resistant product. Many international certifications backup the outstanding quality of **HI-MACS®** concerning environment, hygiene, fire resistance and processes as ISO 9001 and 14001, Greenguard, NSF, LGA and IMO MED (Module B and D), among others.

**HI-MACS®** is in a league of its own with its quality assistance, guaranteed by **Quality Club**, a network of expert and approved fabricators. Thanks to the quality of the material, we can offer the longest warranty package currently on the market: 15 years.

## **HI-MACS® The New Generation**

### **Inspired by Architecture**

***www.himacs.eu***

#### **HI-MACS® Media contact for Europe:**

Mariana Fredes – LG Hausys Europe - +41 (0) 22 879 54 83 – [mfredes@himacs.eu](mailto:mfredes@himacs.eu)  
High resolution photos available at [www.himacs.eu/press](http://www.himacs.eu/press)